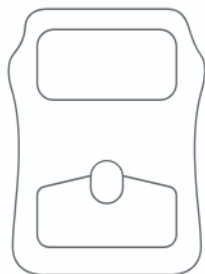


PRODUCT UNPACK

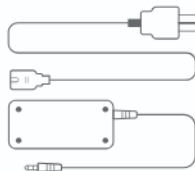
○ PACKAGE CONTENT



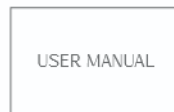
Nail Art printer X1



Note: Take out the protecting foam inside the printer.



Adapter X1



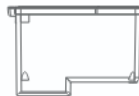
User manual X1



Warranty Card X1

Content of accessory box

Ink cartridge X1
Nail glue X5
Print gel X1
Print Test Base x1
Nail fix base X3
Test paper x1



Ink cartridge X1



Nail glue X5



Print gel X1



Print Test Base x1



Nail fix base X1



Nail fix base X1



Test paper x1

PRODUCT **INTRODUCTION**

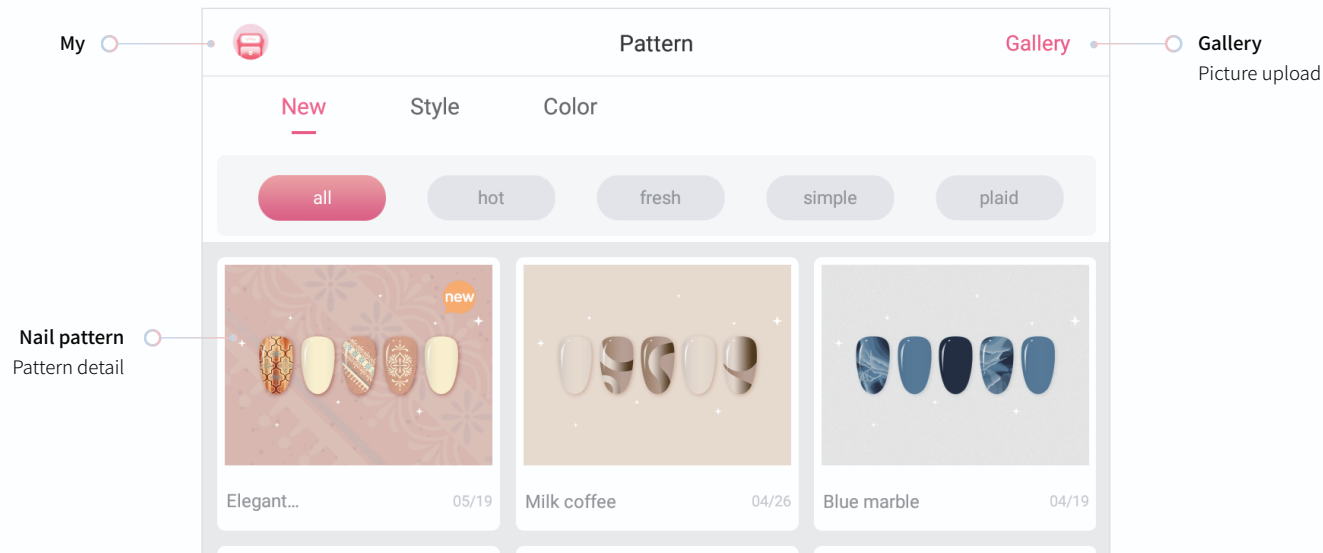
○ HARDWARE INTRODUCTION



Front view



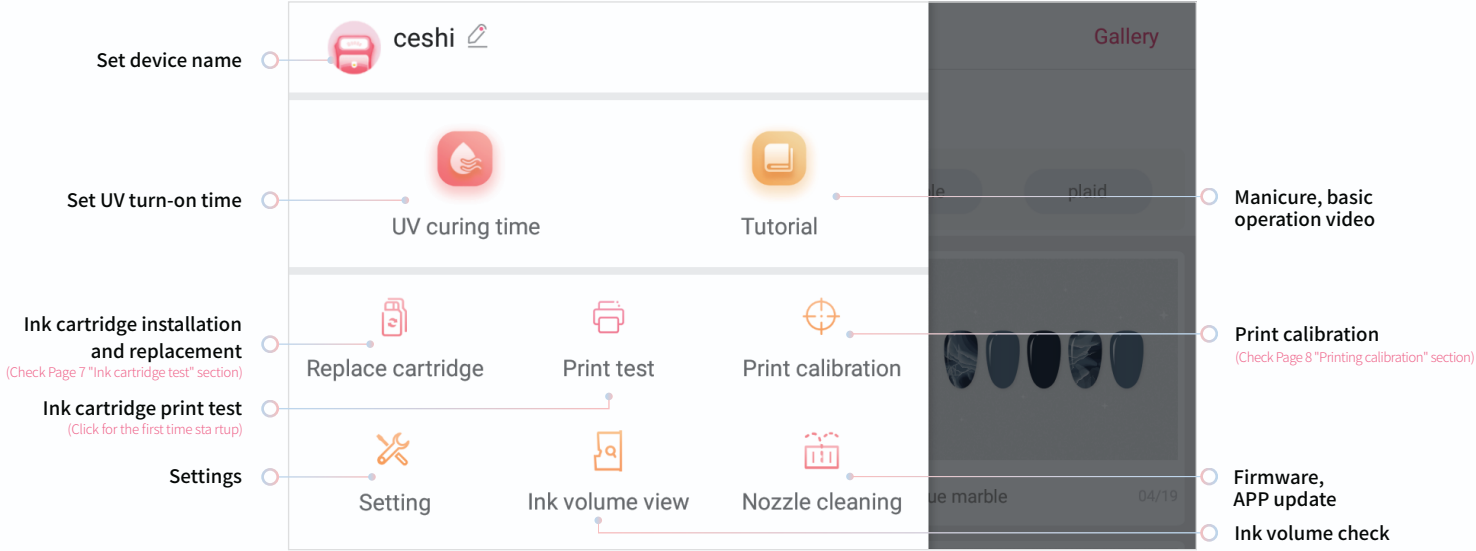
Back view



"Home" Page

PRODUCT INTRODUCTION

APP INTRODUCTION



"My" Page

PREPARATION **BEFORE MANICURE**

Enter "Tutorial-Basic operation" to watch the video

01

Connect Wi-Fi

Swipe down from the top-center edge of the screen and toggle Wi-Fi icon to enter WiFi settings.

02

Ink Cartridge Installation

- ① Press the power switch, the carrier will move out automatically; the LED indicator light is turned yellow and blink; Take out ink cartridge from a silver bag and tear off the blue tape; Do Not touch contact pads and chip on ink cartridge; Remove front cover of printer



Remove the printer front cover



Tear off the bluetape



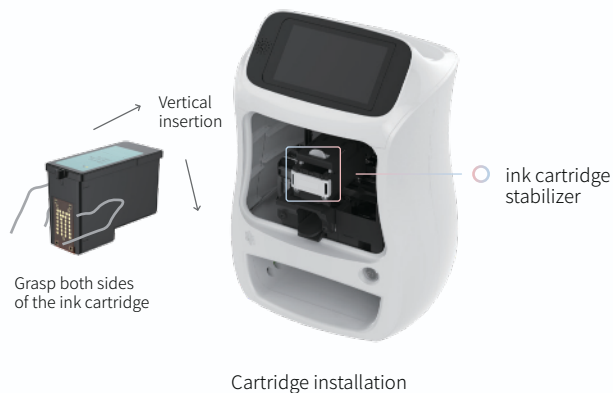
Do not touch the chip



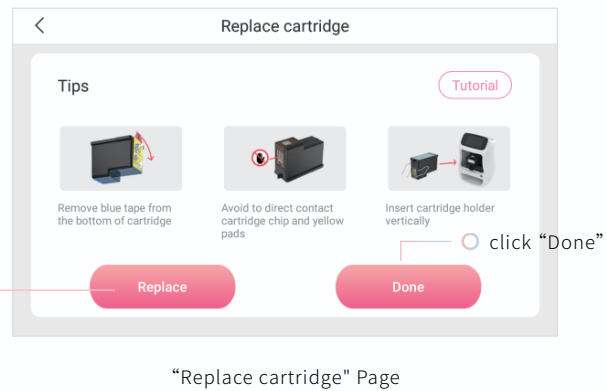
Do not touch the detective points

PREPARATION **BEFORE MANICURE**

- ② Place the ink cartridge into the ink cartridge stabilizer; Push open the upper cover, insert the ink cartridge chip vertically downwards, and then press the cover down and close it.



- ③ After installing the ink cartridge, enter into "My-Replace cartridge", click "Done", after the ink cartridge is moved to original position, the installation is successful;



Note: Before replacing the ink cartridge in the future, you need to click the "Replace Ink Cartridge" button to move the ink cartridge stabilizer to the middle of the shaft.

PREPARATION **BEFORE MANICURE**

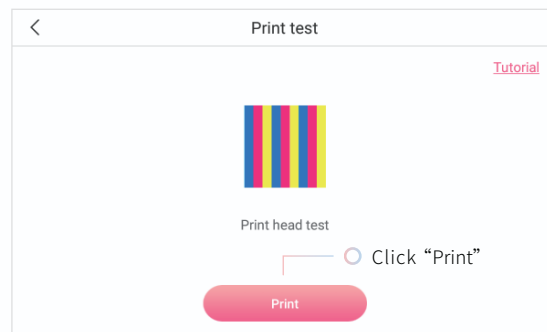


Ink Cartridge Test

- ① After installing the ink cartridge, please conduct print test. Paste the test paper on the nail fixing stand, then place it on the finger tray;



- ② Enter into "My-Print test" interface; click "Print". After printing, compare the printing effect with the printing standard shown on the screen, if there is one color lighter, the print head needs cleaning.



Print test, Page

PREPARATION BEFORE MANICURE

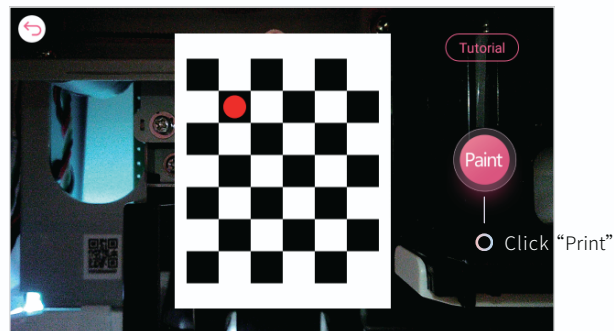
04

Printing Calibration

- ① Paste the test paper on the nail fixing stand, and then put it on the finger tray;



- ② Enter into "My-Printing calibration" interface, click "Print", after auto adjustment, and click "Save", which means the adjustment is successful.



"Printing Calibration" Page

BEGAN TO NAIL

Enter APP "Tutorial-Manicure, basic operation" to watch the video.

01



Nail polish

Nail polishing can provide better manicure.

Enter into APP "Tutorial-Manicure video" can watch the video.

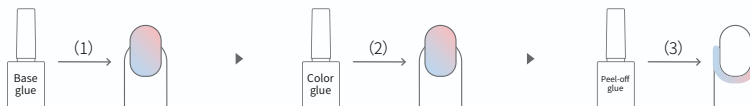
02



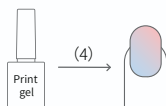
Apply nail glues

- ① Please apply base glue, color glue and peel-off glue in turn;

These three glues need lighting 30-60s.



- ② Evenly apply the special Print gel and light the lamp for at least 2 minutes to ensure that it is completely dry



* The drying time depends on the environment and the application amount

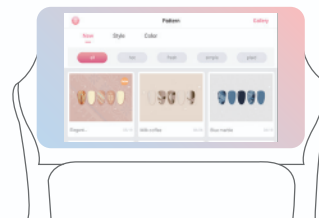
BEGAN TO NAIL



Select pattern

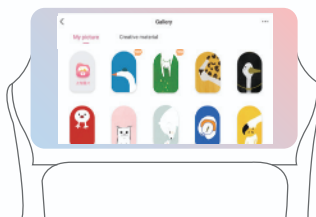
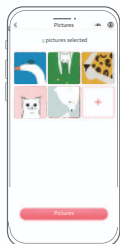
Method One : Recommended pattern in the nail printer

Select the pattern in the APP, paint after downloading.



Method Two: Upload user's picture

Please use "Bluetooth/website" to upload the picture of mobile phone.



BEGAN TO NAIL



Began to paint

After selecting the pattern, press down the finger tray, place the finger on it and press it down to make it flip to fix, then colored paint can be conducted.



BEGAN TO NAIL



Finish painting

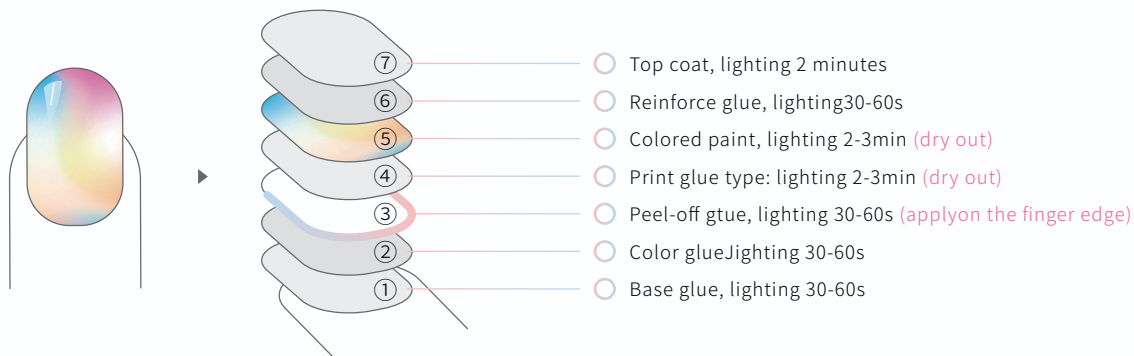
After finishing the painting, please be sure to shine the light for more than 60 seconds and confirm that the ink is dry.

Finally, apply Reinforce glue and Top coat in sequence

Reinforce glue, lighting 30-60s

Top coat, lighting 2 minutes

Let it dry thoroughly. Finally, remove the Peel-off glue.



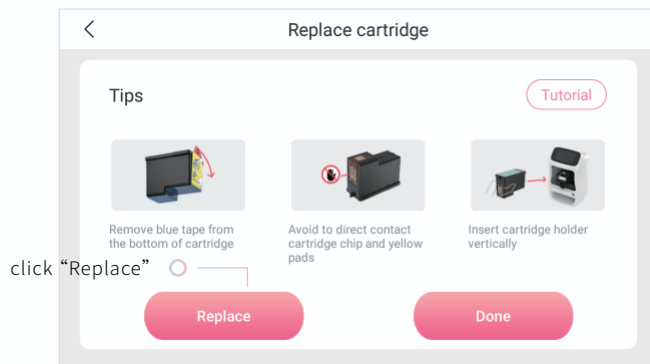
Colored paint steps

EQUIPMENT MAINTENANCE

01

Replace ink cartridge

- ① Remove the front cover. Enter the "replace ink cartridge" page, click the "replace ink cartridge" button to move the ink cartridge stabilizer to the middle of the shaft.

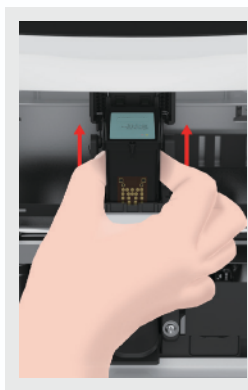


"Replace cartridge" Page

- ② Push open the upper cover of the ink cartridge stabilizer and remove the ink cartridge upwards.



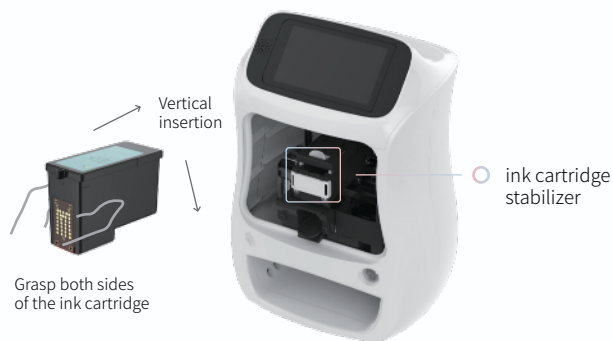
Push the ink cartridge off the base



Remove the ink cartridge upwards

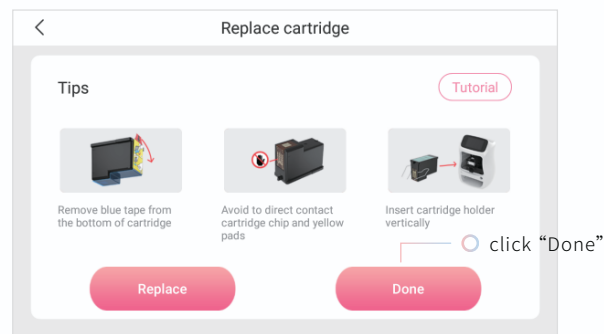
EQUIPMENT MAINTENANCE

- ③ Insert the new ink cartridge vertically into the ink cartridge stabilizer.
Press the cover down again and close it.



Cartridge installation

- ④ Click on the "Install Complete" button on the "Replace Ink Cartridge" page, and once the ink cartridge is moved to its original position, the installation is successful; Close the front cover of the machine.



"Replace cartridge" Page





INDICATOR LIGHT
DESCRIPTION

Indicator Light	Description
White Light	Standby
White Light blinking	System is starting up
Blue Light blinking	Printing
Yellow Light blinking	The ink cartridge is not detected
Red Light blinking	There is unusual object detected in the printing range, please turn off the printer immediately, open the front cover and clean the unusual object, if it can not be removed, or this abnormal can not be solved, please contact the service staff.
Green Light	USB is detected and its upgrade files are checked by the nail printer
Green Light blinking	Software is upgrading

PRODUCT
SPECIFICATION

Environmental Specifications	Operating environment	Operating temperature: 5°C ~ 35°C
		Operating relative humidity: 20% ~ 80% (non-condensing)
	Storage environment	Storage temperature: -20°C ~ 60°C
		Storage relative humidity: 20%~93% (non-condensing)
Wireless connection	WiFi	2.4GHz , 802.11 b/g/n
	Bluetooth	Bluetooth 4.0
Power supply specifications	power supply	Universal power adapter
	Power requirements	INPUT VOLTAGE: 100 ~ 240 VAC, 50 ~ 60 Hz
		Output voltage: 24 Vdc, 2500 mA
	Output power consumption	60W
Acoustic emission	Sound pressure	≤67dB
Physical dimensions	Width/Depth/Height	233mm/177mm/326mm
	Weight	2750g

CARTRIDGE SPECIFICATIONS

Ink	Dye: Ink
Storage environment	Sealed :5°C~35°C
Shelf life	1 year
Proper way to place the ink cartridge	<div>   </div> <div>  Correct way  Incorrect way </div>

NAIL ART GEL SPECIFICATIONS

Storage environment	Sealed :5°C~35°C
	Unsealed: Please close the cap after usage
Shelf life	Sealed: two years
	Unsealed: one year

ANNOUNCEMENTS

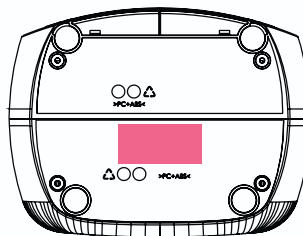
1. Use the original parts and consumables. Please do not use the unauthorized parts and materials;
2. Do not let children use the product alone.
3. Use electric supply of 100V~240V as power supply input.
4. Do not apply the power supply adapter of this product on other products;
5. If there is unusual smell, appearance discolor or other abnormal issue when this product is being used or is in standby mode, please pull out the power cord immediately and stop using the product;
6. When connect or disconnect the power supply, please hold the plug of the adapter; do not pull the cord directly;
7. If the power cord is damaged, please disconnect the power supply and contact the service staff;
8. Place the product to the nearby standard electrical outlet for convenience;
9. When your hands are wet, please do not touch the power cord or electrical outlet;
10. Do not let other objects insert or block the electrical outlet;
11. Do not place the power cord, plug or adapter in the water or other liquid;
12. Do not hang the power cord on the edge of desk or counter and do not place it near heat origin;
13. Disconnect the power supply when leaving it unused for a period or cleaning it;
14. Place the printer on a stable desk or rack;
15. Do not dismantle this printer by yourself;
16. Close all the printer covers when using the printer.
17. Clean the dust and dirt before using;
18. Do not place any heavy object on the top of the printer;
19. Do not force much pressure on the printer;
20. Do not put the printer on the place where is near the sunshine or heat origin;
21. If there is water, metal material or other object inserted to the printer, please disconnect the power supply and contact the service staff.

Notice: The contents of this manual are subject to change without notice.

* All the parts of the printer can be recycled. When it is abandoned, we can call it back freely. Please contact us when you abandon it.

OTHER INSTRUCTIONS

The label of this product is placed in the red box at the bottom of the machine, as shown in the figure on the right



Warning!

Hot components can burn fingers when touched. Wait for half an hour after turning off the power before touching the components.



Attention!

There are gears inside, do not touch them with your hands. Please cover the machine while it is running.